

ES1- X_{pro} (L3E certificate)

(EEC ECE DOT EPA approved)

Specification

Front rim

2.50-17aluminium alloy wheel(with road tire)
J21x1.6aluminium alloy outer ring with wire
wheel(with offroad tire)

Rear tire

120/70-17(road tire)
4.10-18(offroad tire optional)

Wheelbase

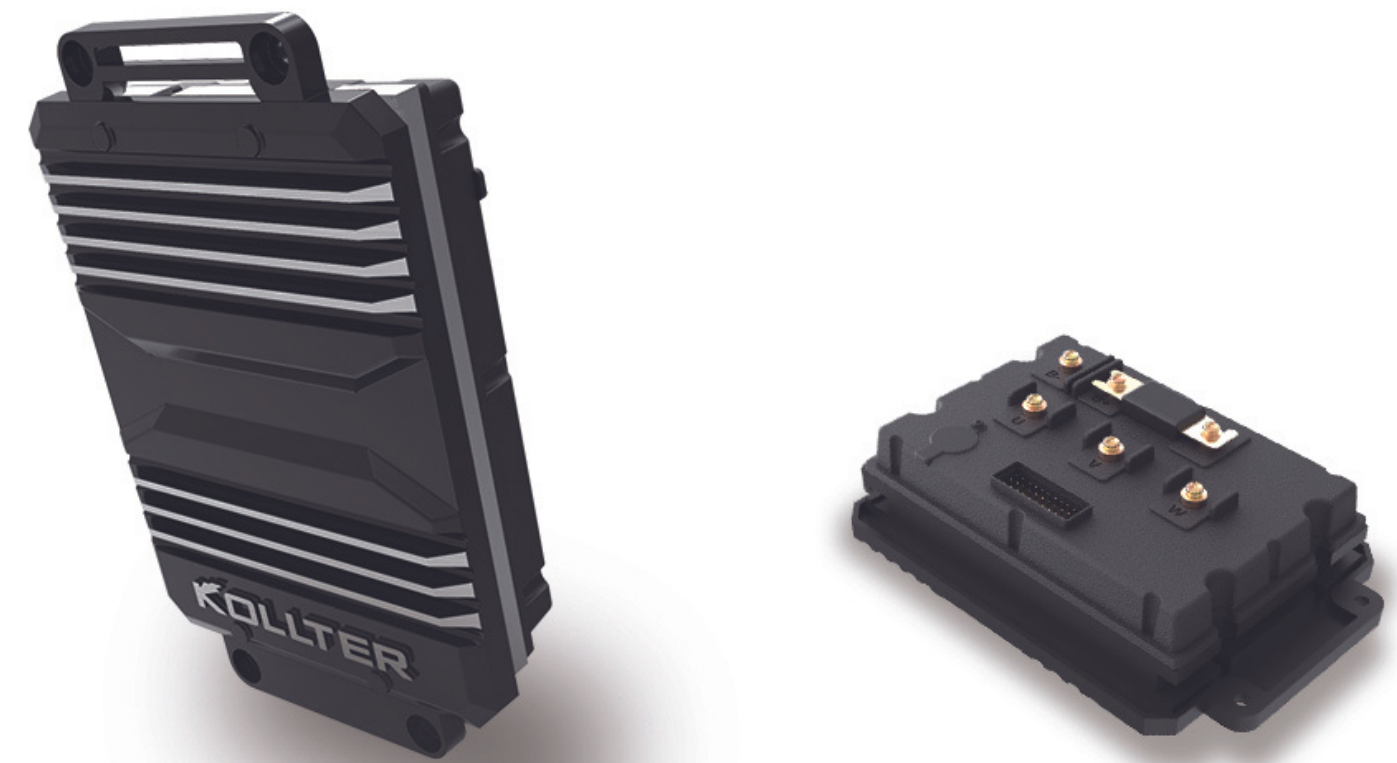
1477mm

Max speed

96KPH

Feature

- OBD equipped
- CBS equipped
- allows two batteries charging and using simultaneously
- Battery swappable



FOC Vector controller

Provide accurate control, maximum output current of 110A, self-developed FOC vector controller, precise drive motor work, make acceleration more smooth, bring better cycling experience.

CONTROLLING SYSTEM

Controller	Instrument	Battery capacity	Max output current
FOC	LCD meters	72V 32Ah (x2)	110A
Start system	Color of instrument		Standard charge current
Keyless start system	White backlight		15A

PERFORMANCE PARAMETER

Range 70km (2 batteries 100km/h) 130km (2 batteries 45km/h)	Front braking 240mm single disc, two cylinder piston callipers	Rear suspension Medium hydraulic shock absorber Adjustable spring preload	Back braking 210mm single disc , single cylinder piston calliper
Front suspension 37mm inverted hydraulic shock absorber Adjustable rebound damping	Power output Rated:5KW Max:11KW	Braking distance < 1.3 (20km/h)	Ground Clearance 320mm
Seat Height 880mm	Net Weight 110kg	Product Dimensions 2080mm×860mm×1150mm	



ES1- X_{pro} off road